



Dvina

VITEBSK SUBSTRATES

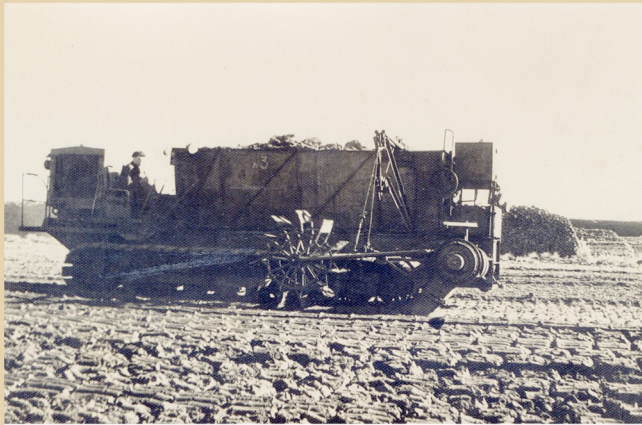


We occupy solid positions on the market of peat extraction and processing and are always ready to offer our clients comprehensive services in this area.



OUR PRODUCTS - YOUR SUCCESS





1965 – foundation of the peat briquette factory (now manufacture on extraction and processing of peat “Dokshicyrajgas”) in order to provide fuel for the population and household consumers of Vitebsk region.



1967 – commissioning of the peat briquette factory.

1979 – arranging of the peat areas on the peat deposit “Zhuravlevskoe” with the peat of low degree of decomposition in order to supply product for export.



1987 – manufacturing process management of the substrate “Dvina” and baled peat with low degree of decomposition “Novobalt”.

September 2007 – three peat-extracting plants came into the membership of «Vitebskoblgas»: UE “Vitebskoe”, production republican unitary enterprise named after Dauman located in Shumilino area and production republican unitary enterprise “Pervoe Maya” in Chashniki area.

June 2011 – commissioning of the modern plant on the production of substrates and baling of peat moss in Krulevschina Dokshicy area.

HISTORY



Vitebskoblgas UE is a powerful and versatile company located in Vitebsk region, Republic of Belarus, and since September 2007 it has become one of the largest peat extracting companies in the country. Our company successfully produces milled horticultural peat and sod fuel peat, competently managing five peatlands with total area of 560 hectares with the reserves of more than 2 million tons. The largest of the cultivated

peatbogs is Zhuravlevskoe located in Dokshicy area with high quality peat and low degree of decomposition, estimated by the true professional growers and agronomists.

Vitebskoblgas UE is the undisputed leader in the Republic of Belarus offering the widest range of substrates (more than 50) which can be delivered to any consumer market. Our company is one of the major producer and supplier of sod peat used

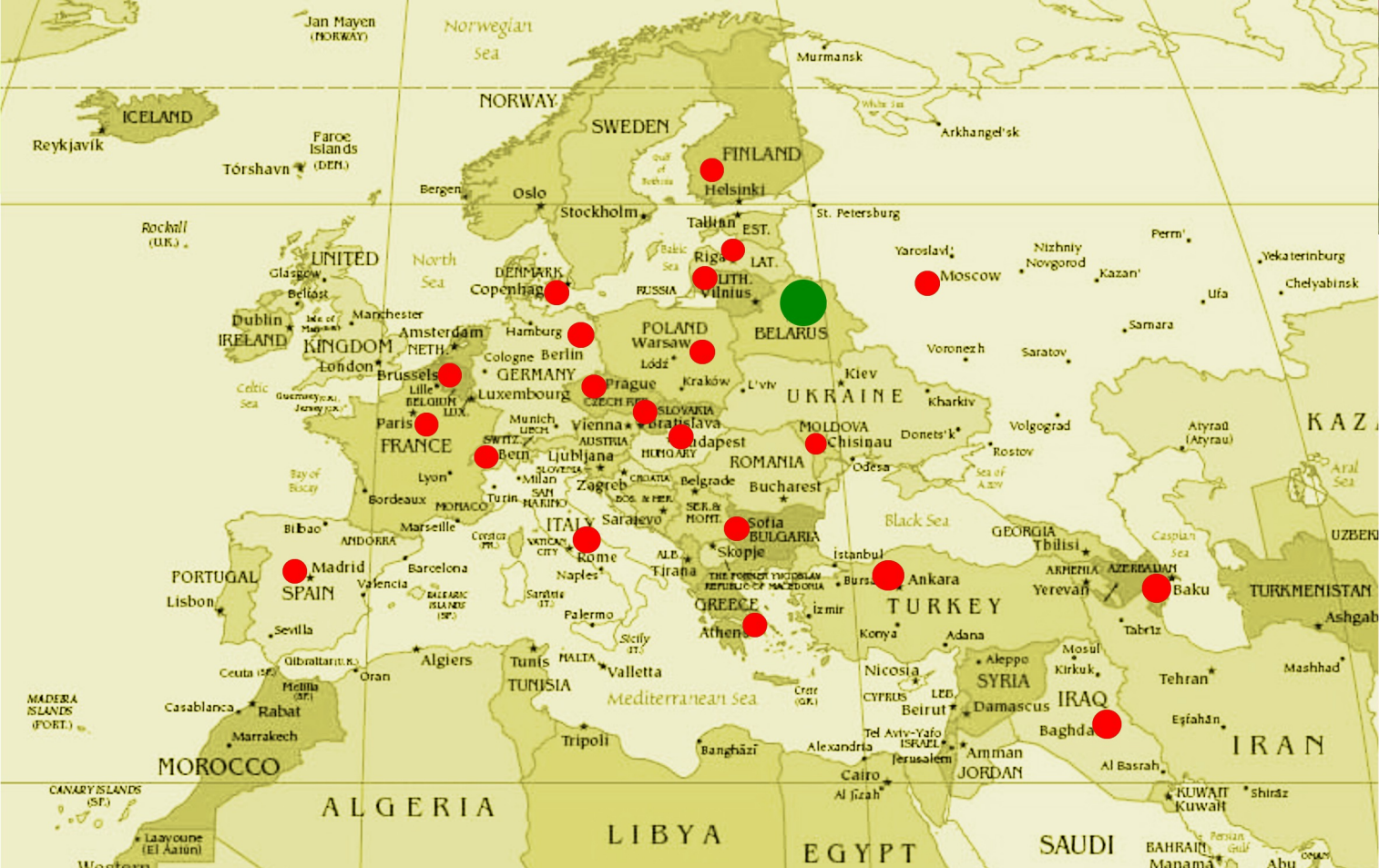
as a clean biofuel and determining the most perspective development of bioenergy today as well.

Thanks to certain improvements and introduction of advanced technologies, focused on consumer preferences, the product range is constantly expanding. The quality control system, the experience of highly qualified personnel, modern technological equipment at our factory in Krulevschina, development and implementation of

progressive ideas of experts, provide the ability to produce only high quality products.

Because the quality is when
customers come back
but not the product!

INDUSTRY



Bales (L)	Bales on a pallet	Pallets in a truck	Pallets in a container 40 HC
5	300 units	20-22 units	6000 units
10	250 units	20-22 units	5000 units
20	150 units	20-22 units	3000 units
55	70 units	20-22 units	1100 units
100	50 units	20-22 units	850 units
250	18 units	20-22 units	450 units
300	bulk	350 bales	350-370 units
Big Bales	1 unit	22-24 units	20 units

Vitebskoblgas UE has been exporting products on different terms according Incoterms 2010 to more than 20 countries (EU countries, Turkey, Russia, Iraq, Azerbaidzan).

But for export, great attention of our company is paid to the sale of products in the domestic market, providing highest delivery and shipment services to local customers.

The sizes of pallets:
length 1,2 m, width 1,1 m.



PRODUCTS CATALOGUE



“UNIVERSAL” SERIES

Total amount of NPK (mg per 100g of dry matter) nitrogen - 180-320, phosphorus - 110-350, potassium - 200-400

Series of
substrates
«Universal»
consists of
3 substrate
types:
«Dvina»,
«Universal» and
«Seedling».





“UNIVERSAL” SERIES

Application Note

Open the bag before using a substrate, place the substrate in a waterproof container and moisture it (for 1 liter of substrate - 0.2 liters of water). Substrate is put into pots, seedling boxes, or into the soil. After 2 - 3 months of the plants growing, it is recommended to top them with the solution of mineral fertilizer NPK (at the rate of 2 g of the active substance per 1 liter of water). It's necessary to top each plant with 0,2 liters of the fertilizer solution every two weeks.

“VEGETABLE GARDEN” SERIES

Total amount of NPK (mg per 100g of dry matter) nitrogen - 120-320, phosphorus - 50-100, potassium - 180-400

Series of substrates «Vegetable garden» consists of 10 substrate types for different vegetables, berries and greens.





“VEGETABLE GARDEN” SERIES

Planting strawberry seedlings

The seedlings are kept in a cool place for more than 5 days before planting. The substrate should be moist but not wet before planting. To grow strawberries you need specifically designed nutritive substrate "Strawberry". First of all you should dig a hole, then add the nutritive substrate "Strawberry" (pre-moistened, but not wet). The substrate contains the necessary proportion of nutrients and does not require additional side-dressing. During the process of landing be sure that the box with seedlings is in the shadow. If everything is done correctly then the root collar should be at the ground level, and the root system is vertical. Too long roots must be pruned up to 8 - 10cm. When everything is done add water. In order to avoid crust formation mulch soil with dry substrate immediately after irrigation.

“GARDEN” SERIES

Series of substrates «Garden» consists of 12 substrate types for growing ornamental plants, fruit trees and lawns.

Total amount of NPK (mg per 100g of dry matter)
 nitrogen - 70-320,
 phosphorus - 60-140,
 potassium – 120-350





“GARDEN” SERIES

How to create a lawn


It's necessary to choose not only the plot but also a set of herbs when you are creating a lawn with your hands. If this is a lawn directly in front of the house, so called the grass parterre, it's good to use a special blend of decorative bluegrass and red fescue for it. To create a sports grass it's better to buy perennial ryegrass and red fescue. For creating a lawn in a Moorish style take a special blend of herbs with scrubby grass flowers.

Read the instructions carefully when choosing a mixture. Each mixture must meet the requirements of climate, both natural and individual conditions of your plot. Focus on the groundwater level, opacity etc. It's recommended to use red fescue, tall fescue and fescue varieties for the shaded areas. Tall fescue and sheep can easily survive in drought.

The cheapest way to create a lawn will always be planting seeds. It does not require large expenditures of money, time, effort. The soil is prepared in advance. The substrate "Grass" was especially designed for it. Apply a substrate evenly (about 2-3 centimeters) into the soil. The substrate "Grass" contains all the necessary micro-and macroelements. Additional feeding is not required. Seeds need to be sown in dry soil in calm weather.

Seeding should be carried far and wide. Rake the land after sowing. It is advisable to roll the ground with a roller, it will be a good protection of the seeds against birds. Plot must be watered. Seedlings appear quite quickly. It is necessary to monitor the moisture content of the soil for the seedlings not to die out. As long as the grass grows you are to remove the weeds.

A few helpful tips may help to keep your lawn in top condition.

- Do not mow the long grass in one go, it's better to do it in stages, otherwise the lawn shrivels and will look unmanaged for a long time.
 - Mow the lawn only in dry weather. If the grass is wet, you will not be able to mow it straight.
 - You should dub the grass parterre with a lawn mower and a box for collecting mowings not to pollute the lawn.
 - Ordinary lawns can be mowed with any mower, if you do not let the grass grow much. Minor trimmings are quickly lost in the grass and do not require to be removed.
 - If you collect grass clippings, use it for mulching the soil under trees and shrubs, and adding it to the compost.
 - The lawn edge is leveled with the garden shears with long handles.
 - Do not forget to water the lawn in the hot, dry weather as needed. Remember that excessive watering causes the loss of the lawn's beauty.
- 

“FLOWERS” SERIES

Series of substrates «Flowers» consists of 27 substrate types for growing flowers of different sorts and houseplants.

Total amount of NPK (mg per 100g of dry matter)
nitrogen - 70-250,
phosphorus - 40-200,
potassium - 50-380.



Peat moss packed in Big Bales

Fractions of peat moss, mm

0-10	10-20	20-40
------	-------	-------

Fine

Middle

Coarse



The degree of decomposition up to 15%;
Ash content: 10%;
Humidity: 53%;
Acidity: pH from 2,5-3,5;
Wood inclusion: up to 1%
The volume of peat: 4,0-6,0 cubic meters on a pallet
Weight: 1000kg \pm 50kg
Radioactivity < 18 Bq/kg

The usage of peat, produced at our factory, provides plants protection against parasites and pathogens, ensures constant feeding through nutrients contained in peat and maintenance of the optimum soil acidity, good aeration of roots. All this contributes to higher yields of crops.

The following fractions of peat moss are used depending on the sphere of application: 0-10 mm, 10-20mm, 20-40mm.



Sod peat

Ash content	up to 5%
Cleaning humidity	up to 45%
Calorific value of	3,000-3,400 kcal / kg

Sod peat is environmentally friendly fuel, as it's extracted directly from the depths of the peat deposit. Sod peat is lined up on the peat deposit with the specialized equipment and then it's subjected to drying. When peat humidity reaches an appropriate level, finished product is harvested and sold to the customers.

The usage of peat as a fuel is caused by its composition: high carbon content, low content of sulfur, non-flammable hazardous residues and impurities. Sod peat is characterized by environmental purity of burning (low sulfur content), full combustion (low ash residue) and emission of large amount of heat. It's necessary to burn the amount of firewood in 1.5 times more than sod peat to get the same amount of heat. This fact plays very significant role to prefer sod peat to other fuels.

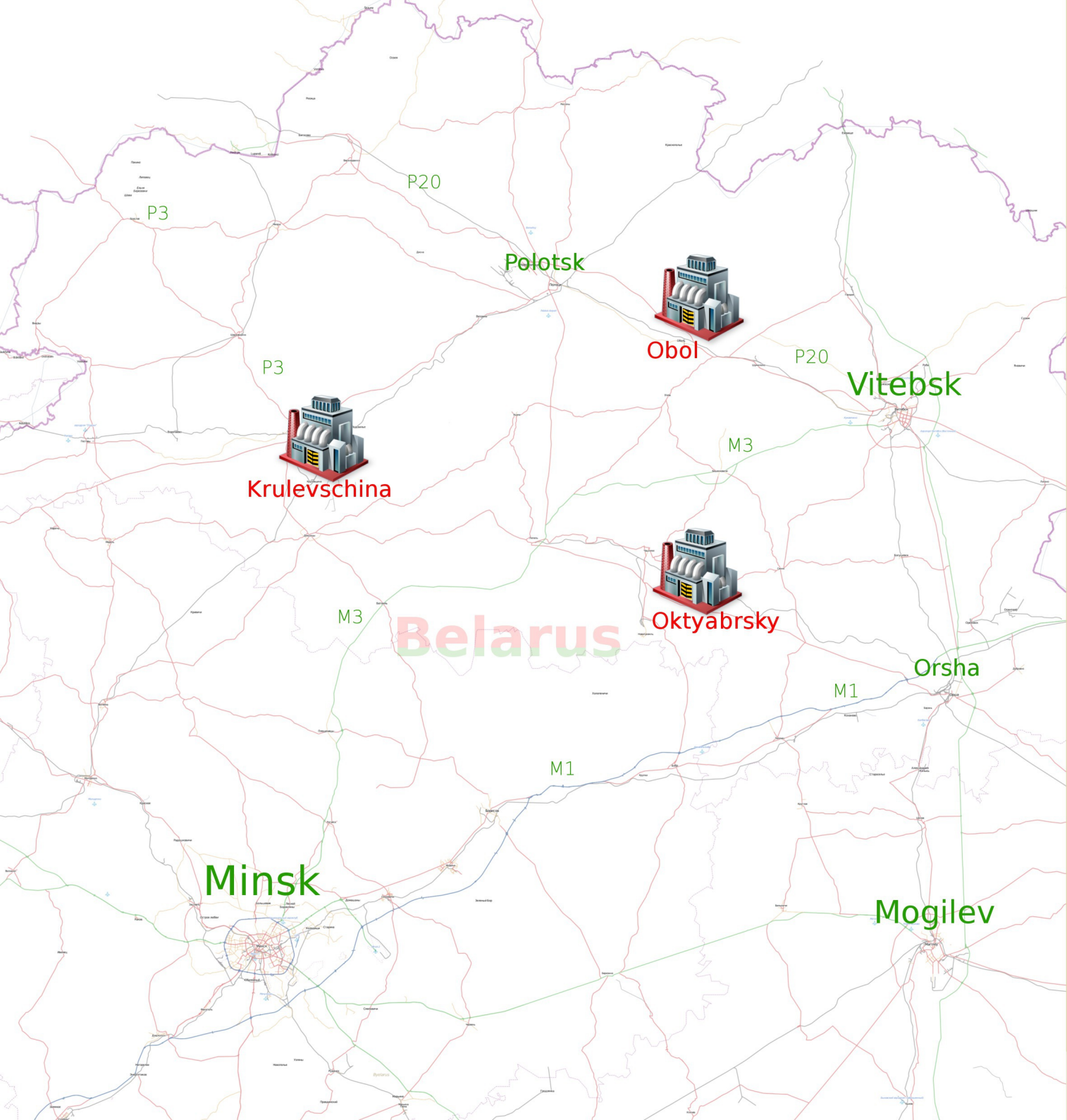
All of the above mentioned characteristics make sod peat very promising local source of heat and power energy: cheaper than usage of coal and fuel oil.

Sod peat is used in boilers to provide villages, towns, military units etc. with heat.

In order to increase the demand for high-quality sod peat among the population and for the purposes of export development, UE "Vitebskoblgas" purchased and put into operation in 2008 complex of high-capacity technological equipment for sod peat extraction (made in Finland). The complex has approved itself to be very efficient: the purchased equipment increased the amount of extracted raw material in several times, and the quality of sod peat exceeded the quality of peat extracted by previously used equipment.

UE "Vitebskoblgas" offers for sale sod peat in bulk and in big bags.





P3

P20

Polotsk



Obol

P20

Vitebsk

P3



Krulevschina

M3

M3

Belarus



Oktyabrsky

M1

M1

Orsha

Minsk

Mogilev

UE "Vitebskoblgas" 210029 Republic of Belarus, Vitebsk, ul.Pravdy, 36.

Phone: +375 (212) 47 45 09

Phone: +375 (212) 47 50 87

Fax: +375 (212) 47 30 70

E-mail: torf@oblgas.by

Dokshicyrajgas RPA 211720 Republic of Belarus, Vitebsk region, Dokshicy area,
Krulevshchina, Sales department.

Phone/Fax: +375 (2157) 35560

Phone/Fax: +375 (2157) 35561

E-mail: export@dokshtorf.oblgas.by

Polotsgas PA 211411, Republic of Belarus, Vitebsk region, Shumilino area,
Obol, manufacture on extraction and processing of peat.

Phone/Fax: +375 (2130) 36446

E-mail: daumana@torfobl.oblgas.by

"Lukomlrajgas" RPA 211162, Republic of Belarus, Vitebsk region, Chashniki area,
Oktyabrsky, manufacture on extraction and processing of peat.

Phone/Fax: +375 (2133) 25445

E-mail: oper@torfnluk.oblgas.by

Visit our site TORF.BY where you can find the full range of product, prices and all the necessary information.

Compositions of the substrates were developed by the republican unitary enterprise
"BELNIITOPPROEKT".

The entire range of substrates is available in the package 5l, 10l, 20l, 55l, 100l, 250l, 300l.

We provide delivery services throughout the territory of the Republic of Belarus.





Vitebskoblgas UE